

ch

LIBRARY
RECEIVED
★ FEB 25 1959 ★
U. S. Department of Agriculture

62



1959
Mums from Minnesota

THE LEHMAN GARDENS
FARIBAULT, MINNESOTA



ADORABLE. 75c each; 3 for \$2.00



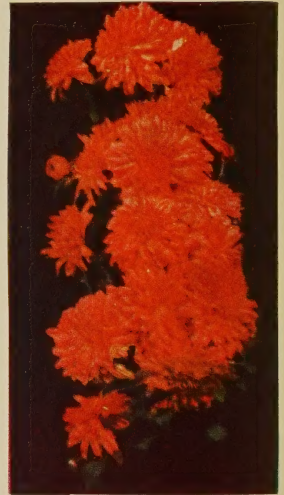
NEW PAPER WHITE. 75c each; 3 for \$2.00



VIOLET
50c each; 3 for \$1.25
DELIGHT. 60c each; 3 for \$1.50



COMPANION. 60c each; 3 for \$1.50



EARLY HARVEST
50c each; 3 for \$1.25



7
Earliest
MUMS

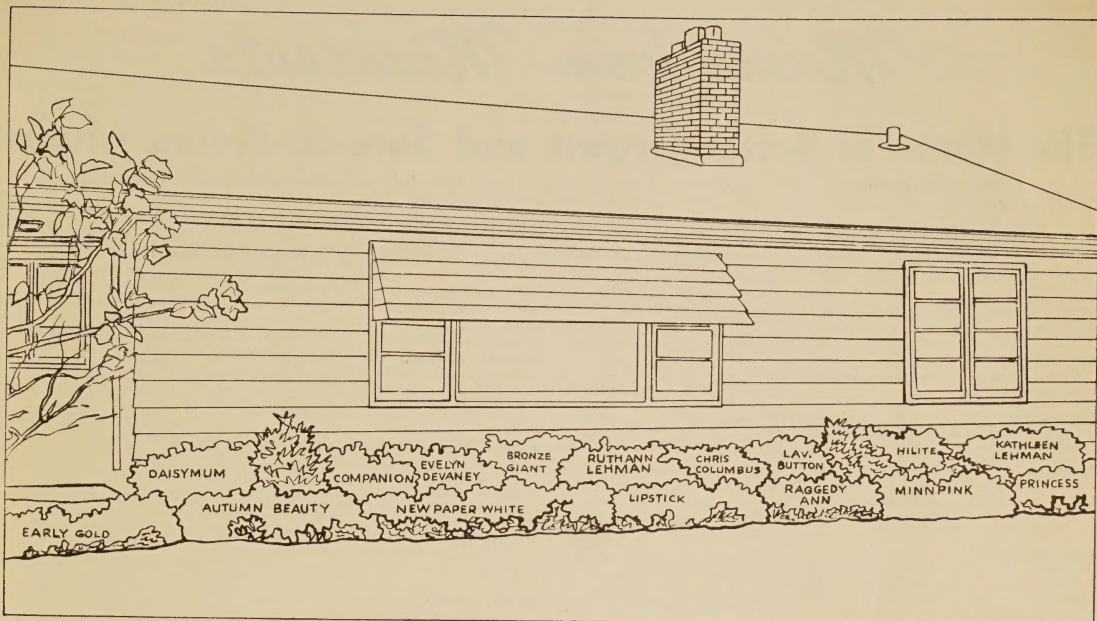
A selection of the very best of the very earliest flowering Mums. All begin blooming in late August and early September.

7 Sure-to-Bloom Plants

\$3.50
(1 of each pictured)



ROUGE CUSHION. 60c each; 3 for \$1.50



Foundation planting at the home of Mr. and Mrs. Walter Burkhartzmeyer, Faribault, Minn.

Foundation Planting Mum Collection

16 PLANTS (one of each pictured) . . . \$7.50

48 PLANTS (three of each pictured) . \$20.00

"Princess Kay of the Milky Way." The Minnesota Dairy Princess



Mums from Minnesota

The Home of Better-Grown and Sure-to-Bloom Mums

WE SPECIALIZE. We grow only Garden Mums and we grow them well. Our very modern establishment is located in southern Minnesota and has been built especially for the growing of better Garden Mums.

Dependable blooming dates, descriptions and growth data are recorded each year from actual observations in our own test gardens. This enables us to offer only the newest and most dependable varieties.

You can be sure of better-grown, better-packed and sure-to-bloom Mums when you order from us. Plants will be ready and available from February 15 to June 15.

D., Double; SD., Semi-double; S., Single; Sp., Spoon

Name and Description	Height in Inches	Blooming Date	Price		Name and Description	Height in Inches	Blooming Date	Price	
			Each	Per 3				Each	Per 3
Admiral. D. Pictured p. 19. Rich velvety dark red that is glorious for cutting or garden display.....	30	Oct. 5	\$.075	\$2.00	Blanche Litwiller. D. (Kraus.) This incurved lavender-pink pompon is excellent for cutting and floral work. Three or four 2½-inch flowers are borne on long stems and become ball shaped when fully open.....	29	Sept. 23	\$.075	\$2.00
Admiration. D. (Bristol.) Pictured p. 17. Large flowers in a medley of gleaming peach and bronzy salmon.....	26	Sept. 24	.75	2.00	Bronze Giant. D. (Lehman.) Pictured on cover and p. 10. Imposing flower of bright intense bronze in decorative form. Five-inch blooms produced in quantities on perfect upright stems, ideal for cutting.....	30	Sept. 22	.75	2.00
Adorable. D. (Lehman.) Pictured p. 2, 27. This new pink has everything: large flower, early and dependable bloom, gorgeous color and breathtaking beauty. Color clear bright rose-pink with salmon reverse.....	20	Sept. 15	.75	2.00	Bronze Pat. D. (Muller.) Bud sport of Patricia Lehman. As beautiful a bronze as Pat is a pink.....	24	Sept. 28	.75	2.00
Adorable Spoon. D. (Lehman.) New 1959! A sport of Adorable and an exact duplicate of that variety except for the petal formation. Flowers are large, deep rose-pink, with long quilled petals and short spoons.....	20	Sept. 15	.75	2.00	Butterscotch. D. (Kraus.) Pictured p. 9. Giant blooms of golden yellow, often 5 inches across. Early flowers golden yellow, later taking on bronze tints. Perfect bush habit. Magnificent!.....	30	Sept. 26	.75	2.00
Albaflores. D. (Lehman #1186.) New 1959! A finished flower with heavy, velvety texture and snow-white blooms in abundance. This one has excellent garden value because of its sturdy growth, heavy-textured flower and extremely free-flowering qualities.....	24	Sept. 20	.75	2.00	Candleglow. D. (Lehman #1183.) New 1959! Tall, clean-cut crisp creamy white pompons in abundance. Because of the beautiful growth habit, the plant itself is an ornament in the garden.....	30	Sept. 28	.75	2.00
Alert. D. (Becker.) Large, early, dark purple with a silvery cast. Very fine.....	22	Sept. 20	.60	1.50	Carnival. D. (Bristol.) Pictured p. 17. A large, gleaming burnt-orange flower. An excellent plant with lustrous green foliage.....	26	Oct. 10	.75	2.00
Amethyst Cushion. D. (Bristol.) Sparkling pompons of glowing amethyst-purple. A Midwest favorite.....	14	Sept. 10	.60	1.50	Champagne. D. (Lehman.) An entirely new color in Mums—could be described as ivory-shell-pink. Large bloom on strong, well-branched plants. An exquisite color.....	36	Sept. 28	1.00	2.50
Ann Ladygo. D. (Kraus.) An anemone-flowered cushion of light camellia-rose-pink. 2½-inch bloom with 1¼-inch, raised center. A delicate beauty.....	16	Oct. 5	.75	2.00	Charles Nye. D. (Kraus.) Pictured p. 11, 19. Large, 3-inch, fully double, rounded flowers of buttercup-yellow. Excellent. The standard by which all other yellows are judged.....	28	Sept. 28	.50	1.25
Apache. D. (Kraus.) Pictured p. 9, 11. Orient-red to dark brilliant fire-cracker-red with golden overcast. Quilled petals. Very tough, weather-resistant flowers, 4 to 5 inches in diameter. In bloom from mid-September to November.....	24	Sept. 15	.75	2.00	Chippewa. D. (Longley.) Pictured p. 27. Gorgeous, bright aster-purple, slightly incurved. Does well in the North.....	24	Sept. 4	.50	1.25
Apricot Glow. D. (Bristol.) Pictured p. 11. Rich bright apricot-orange. A summer-flowering cushion type.....	17	Sept. 11	.60	1.50	Chris Columbus. D. (Rosebud.) Pictured on cover. A most outstanding ivory-white. Luxuriant growth; unexcelled for cutting.....	26	Sept. 28	.60	1.50
Apricot Spoon. Sp. (Lehman.) A pleasingly different spoon of light apricot-rose. Extremely free flowering.....	28	Oct. 5	.60	1.50	Companion. D. (Lehman.) Pictured on cover and p. 2. Reliable early-blooming, fully double golden bronze. A grand companion to the darker Early Kathleen. Excellent long stems for cutting.....	24	Sept. 15	.60	1.50
Artist's Delight. D. (Bristol.) Tastefully elegant, pastel coral-geranium-pink. Lovely 3-inch bloom. Unearthly beauty; tidy habit.....	24	Sept. 27	.75	2.00	Courageous. D. (Kraus.) Shining dark ruby-red, large double flowers. A truly magnificent plant.....	26	Sept. 28	.60	1.50
Autumn Beauty. D. (Wallie's Gdns.) Pictured on cover, p. 12, 27. A brilliant sparkling reddish chestnut. The best early bronze.....	15	Sept. 4	.50	1.25	Crown Jewel. D. (Kraus.) A 3-inch, currant-red flower with a brilliant sheen. Strong, sturdy, free-blooming through October.....	27	Oct. 1	.60	1.50
Avalanche. D. (Dreer.) Pictured p. 12, 17. Large, shaggy white with cream center. Everyone's favorite. Good for cutting.....	16	Sept. 4	.50	1.25	Crowning Glory. D. (Lehman.) Magnificent new flower of Spanish-orange overcast with coral, darker at center. Strong, upright plant. Could be described as a glorified Beacon that blooms two weeks earlier.....	30	Sept. 25	.75	2.00
Beacon. D. (Lehman.) Full, double, 4-inch flower of coral-apricot shading to flaming nasturtium-orange at center. Tall, sturdy plant for cutting.....	36	Oct. 8	.60	1.50	Crystal. D. (Lehman #1137.) New 1959! A new wide-petaled, pure white pompon that is outstanding for cutting. Long, straight stems.....	28	Sept. 27	.75	2.00
Betty. SD. (C-P.) Pictured p. 19. Splendid upright rose-pink without a trace of magenta. One of the finest pinks.....	28	Sept. 28	.50	1.25					
Biretta. D. (Kraus.) Glowing soft cardinal-red. Tall, upright plant in bloom last week in September through October.....	34	Sept. 23	.60	1.50					

Name and Description	Height in Inches	Blooming Date	Price		Name and Description	Height in Inches	Blooming Date	Price	
			Each	Per 3				Each	Per 3
Cydonia. D. Pictured p. 11. Brilliant orange-chestnut overlaid with mahogany. Everyone likes it.	30	Oct. 8	\$0.50	\$1.25	Gammy. D. (Lehman.) An extremely prolific, deep rosy lavender pompon. Flowers completely double, with very fine substance and beautiful color.	24	Sept. 20	\$0.75	\$2.00
Dainty. D. (Lehman.) A beautiful blend of light lavender-lilac aging to soft white with silvery cast. Very early.	16	Aug. 27	.60	1.50	Garden Queen. D. An old standby in apricot-bronze. Extremely early flowering and very winter-hardy.	20	Aug. 20	.60	1.50
Daisy-mum. S. (Lehman.) Pictured on cover and p. 10, 18. The newest and best single in existence. Flower opens beautiful ivory, changing to pure alabaster-white, with three to four rows of wide flat petals with rounded ends. Pure gold center. Tall, base-branched plants give glorious cutting stems.	30	Sept. 22	.75	2.00	Garnet Spoon. Sp. (Lehman.) Pictured p. 16. Tall, upright, wine-red spoons with purple tubes and a domed yellow center.	26	Oct. 4	.60	1.50
Dandy. D. (Lehman #1082.) New 1959! A profusion of 3-inch, coppery bronze flowers that resemble small incurved football Mums. Rather short but extremely strong growth. A dandy!	25	Sept. 16	.75	2.00	George Luxton. D. (Lehman.) An extremely early, full double, wide-petaled, soft bronze flower 3½ inches in diameter. Excellent plant with abundant base branches for cutting.	25	Sept. 12	.60	1.50
Delight. D. (Lehman.) Pictured p. 2. Large, perfect flower of golden yellow. Excellent plant and foliage. We consider this the best early yellow.	26	Sept. 7	.60	1.50	Gladness. D. (Kraus.) Pictured p. 12. Fully double, clear China-rose. Dwarf, free-flowering plant. Winter-hardy and one of the first to bloom.	18	Aug. 28	.50	1.25
Dr. L. E. Longley. D. (U. of Minn.) Earliest fully double, bright rosy lavender. Usually the very first Mum in our collection to bloom.	20	Aug. 20	.60	1.50	Gleam. D. (Lehman #1231.) New 1959! Masses of small (1½-inch), pure golden yellow pompons on trim plants from mid-September to frost.	20	Sept. 15	.75	2.00
Early Crimson. D. (Lehman.) Pictured p. 10, 13. Brilliant sparkling jewel-like, pompon flowers of bright crimson, on stiff, upright plants. Very hardy.	26	Sept. 14	.60	1.50	Gold Button. D. (Kraus.) Pictured p. 13. A complete mass of golden yellow with brilliant Spanish-orange eye spot. 1¼-inch button pompon flower, completely double.	22	Sept. 10	.75	2.00
Early Gold. D. (Lehman.) Pictured on cover and p. 27. Very early! Bright golden yellow pompon with dark foliage. Excellent for pots or borders.	18	Sept. 4	.50	1.25	Gold Daisy. S. (Lehman.) Our best gold single to date. Opens gold to canary-yellow, with big dome-shaped golden center. Three-inch flowers on 20-inch cutting stems.	21	Sept. 17	.75	2.00
Early Harvest. D. (Kraus.) Pictured p. 2. A mass of charming mahogany-orange flowers for two months. Superior to all popular cushion varieties.	16	Sept. 7	.50	1.25	Gold Spoon. D. (Lehman.) Pictured p. 16. Large flower of gold shading to aureolin-yellow on a dwarf plant. Tube longer than spoon and always about the same color.	18	Oct. 1	.60	1.50
Early Kathleen. D. (Lehman.) An early coppery bronze. A dead ringer in both color and form for the popular Kathleen Lehman, but two to three weeks earlier. Wonderful for cutting.	26	Sept. 12	.60	1.50	Golden Fantasy. D. (U. of Minn.) The ultimate in carnation-flowered Mums. Petals are tubular, three-pronged and forked. Clean, dark green foliage and strong, upright growth enhance the bright gold flower. A must for all Mum gardens. Completely different.	20	Sept. 20	.75	2.00
Early Lavender. D. (Kraus.) A delicate-toned, early-flowering, pure pearly lavender with slightly deeper center. Free flowering and vigorous cushion.	20	Sept. 20	.60	1.50	Golden Mound. D. (Lehman.) Pictured p. 12. Excellent golden yellow cushion. Numerous 2-inch flowers on short, dark green branches.	18	Sept. 12	.50	1.25
Early White. D. (Lehman.) Extra-early, clean cream-white. Wide petals and fine texture with clear coloring make this our best early white.	18	Aug. 28	.60	1.50	Granny Lehman. D. (Lehman.) Sparkling, heavy-textured, pure white with striking petal arrangement. Loose branching plant produces long cutting stems with six gorgeous flowers. Excellent for arrangements and does not turn lavender with age.	22	Sept. 20	.75	2.00
Edna Rowley. D. (Kraus.) Over 500 lavender-pink, ruby-centered pompon flowers cover this mound-shaped plant. Excellent for cut flowers and floral arrangements. Edna Rowley is definitely the most prolific-blooming Mum we grow.	24	Sept. 26	.75	2.00	Harvest Bronze. D. (U. of Minn.) A rich apricot-bronze with a gold undertone. Large, 3-inch flowers on a low plant. Very early.	15	Aug. 20	.60	1.50
Ermine. D. (Kraus.) Pictured p. 11. Wide-petaled pure white with cream center. Tall, sturdy plant and vigorous grower. Excellent when cut.	30	Sept. 22	.60	1.50	Hilite. D. (Lehman.) Pictured on cover and p. 10. Fine large, dahlia-like flared yellow. Strong clean plant with beautiful dome-shaped individual flowers.	30	Sept. 25	.75	2.00
Evelyn Devaney. D. (Lehman.) Pictured on cover and p. 17, 19. The most delicately beautiful of all Mums. Color is new to Mums—true pearly shell-pink. Flowers are stylishly tailored with closely imbricated petals.	26	Sept. 26	.75	2.00	Holiday. D. (Kraus.) Pictured p. 9. Strong plant supporting an abundance of bronze-gold flowers with pure bronze center. Large flower, excellent when cut.	24	Sept. 27	.60	1.50
Fairbow. D. (Kraus.) Heavy-blooming lavender-pink pompon. Splendid upright growth makes it a good cut flower.	24	Sept. 10	.60	1.50	Honeycomb. D. Pictured p. 13. Formal golden yellow pompon.	24	Sept. 28	.75	2.00
Football Bronze. D. (Lehman.) Pictured p. 19. An extremely early, large-flowering, incurved bronze. Very tall, strong, upright plant.	26	Sept. 22	.60	1.50	Indian Red. D. (Lehman.) Pictured p. 11. Large, Indian-rust-colored Mum. Petals radiate from a unique center swirl which gives bold flower distinctive charm.	26	Oct. 3	.75	2.00
Fred Stone. D. (Kraus.) Large, very dark bright red. Brilliant color. Extra large and good disbudded.	30	Oct. 1	.75	2.00	Jessamine Williams. Sp. (Kraus.) Beautifully quilled white spoon, early and very free flowering.	24	Sept. 20	.60	1.50
					Jewel-tone. D. (Kraus.) Pictured p. 13. Sparkling bright rose-pink pompon. Excellent for pots or short-stemmed cuts. Really a jewel.	24	Sept. 25	.60	1.50
					Joan Helen. SD. (Heuser.) Sparkling garnet-like shading to purple; bright yellow center. Makes an excellent border.	18	Sept. 10	.60	1.50

Name and Description	Height in Inches	Blooming Date	Price Each	Per 3	Name and Description	Height in Inches	Blooming Date	Price Each	Per 3
John Furst. D. (Kraus.) A typical fall color in Mums. Fully double, brilliant glistening orange. Wonderful strong plant and beautiful flowers.....	30	Oct. 1	\$0.75	\$2.00	Masquerade. D. (Bristol.) Pictured p. 13. A glistening mass of silvery lavender and rose pompons. Trim neat, compact plant. Flowers completely smother the plant.....	24	Oct. 6	\$0.75	\$2.00
John Milbrath. D. (Kraus.) Glistening bright yellow, 3-inch pompon. Finely knit petals, making a firm, long-lasting bloom. Finest early yellow cut flower.....	26	Sept. 10	.75	2.00	Minnehaha. D. (U. of Minn.) Delightful salmon-rose flowers completely cover the mound-like plants in early fall.....	20	Sept. 9	.75	2.00
Joyous. D. (Bristol.) Pictured p. 11. Salmon-rose blooms with a golden haze completely cover the mound-like plants.....	20	Sept. 26	.75	2.00	Minnpink. D. (U. of Minn.) Pictured on cover and p. 28. The most gorgeous color of all the compact, early cushion varieties. Thousands of clear, clean rose-pink flowers completely hide the mound-like plant.....	16	Sept. 20	.75	2.00
Jubilee. D. (Bristol.) Pictured p. 12, 13. Opens crimson, melting to a deep clear red. Plant all aglow for weeks.....	18	Oct. 1	.60	1.50	Mojave Gold. D. (Kraus.) Pictured p. 9. Immense, disk-like flowers of sparkling golden bronze. Huge blooms. An exhibitor's favorite.....	28	Sept. 27	.75	2.00
Judy. D. (Kraus.) Tight, upright plant with compact, ball-shaped pompons. Flowers white aging to lavender, with white center. Very tidy plant.....	21	Sept. 27	.75	2.00	Mt. Hood. D. (Kraus.) Exquisite, tightly knit, aster-like pure white with green cast in center.....	24	Sept. 22	.75	2.00
Julie B. D. (Lehman.) Pictured p. 18. A wonderful white button pompon. Shows slight cream center when fresh but turns completely white and ball shaped, with no eye, when fully open. Upright cushion growth. Good for cutting.....	21	Sept. 20	.75	2.00	Muriel Rice. D. (Lehman.) Pictured p. 9. Fully double, 4-inch flowers of light primrose-yellow aging to deep cream early in the season. Later it picks up a lavender tint much like Peace rose. Another American variety showing the large flower influence of English blood. Extremely thrifty.....	26	Sept. 25	.75	2.00
Kathleen Lehman. D. (Kraus.) Pictured on cover. Brightest orange-gold, deepening to red-gold at center. Exciting bronze shades.....	28	Sept. 28	.60	1.50	Myrtle Walgreen. D. (Kraus.) Rich amaranth-purple underlain with silvery lilac, aging to clear, clean mallow-purple. Excellent.....	26	Sept. 28	.60	1.50
King's Ransom. D. (Bristol.) Very tall, majestic plant with 3-inch, golden flowers, excellent for cutting.....	28	Oct. 1	.90	2.25	Nanook. D. (Kraus.) A dwarf, compact mound completely smothered by white flowers with cream centers.....	14	Sept. 14	.60	1.50
Lady's Choice. D. (Lehman.) Pictured p. 18. A large pastel, which could be described as pink-ivory. A fully double, 4-inch flower on a magnificent plant. Fine for arrangements.....	36	Sept. 26	.75	2.00	New Drifted Snow. D. (Lehman.) Heavy-textured, 3-inch, white blooms for nearly two months. Very clean plant with spreading growth and drifting appearance.....	23	Sept. 10	.60	1.50
Lavender Button. D. (Lehman.) Pictured on cover. Another of the wonderful new button introductions. Lavender-blue pompon flower with darker center. Good, free blooming and similar in flower to Masquerade. Plant very tall.....	28	Sept. 15	.75	2.00	New Martin's White. D. (Lehman.) A larger, more vigorous plant and flower than Martin's White. Absolutely pure white, wide-petaled, 4-inch flowers with light green foliage on cushion plant. In bloom for two months.....	20	Sept. 20	.75	2.00
Lee Powell. D. (Kraus.) Pictured p. 11, 19. Masses of fluffy Chinese-yellow flowers with a slight orange tinge at center. Very similar to large greenhouse varieties. Tall, upright bush.....	30	Sept. 23	.60	1.50	New Paper White. D. (Lehman.) Pictured on cover and p. 2. Improved plant and flower of old Paper White. Wide, glistening, purest white flowers completely cover the plant. Extra vigorous growth.....	16	Sept. 6	.75	2.00
Lemon Drop. D. (Lehman.) A yellow button pompon with a slight green overtone radiating from the center. Extra fine foliage and habit. Very hardy.....	17	Sept. 8	.60	1.50	Nina Rebmen. D. (Kraus.) Bright dark red, 3-inch flower on fine plant. Does not fade. Rich color.....	28	Oct. 5	.75	2.00
Limelight. D. (Floralane.) Lively light yellow pompon. Very vigorous grower. Early; good for cutting.....	34	Sept. 20	.60	1.50	Nobility. D. (Lehman #1044.) New 1959! Velvety-textured, deep dark red flowers on strong branched plants. Excellent dark green foliage.....	26	Oct. 4	.75	2.00
Lipstick. D. (Grand Mere.) Pictured on cover. A grand, bright mound of sparkling crimson-red flowers on compact plants.....	22	Sept. 25	.75	2.00	Nye's Favorite. D. Masses of lavender-pink flowers with golden shadings.....	24	Sept. 12	.60	1.50
Loveliness Spoon. D. (Lehman.) Pictured p. 16. A superb, fully double, carmine-pink spoon. Unique.....	20	Sept. 26	.60	1.50	Old Lavender. D. (Lehman.) Pictured p. 18. Massive, pure lavender self flowers on strong, sturdy stems.....	34	Sept. 30	.60	1.50
Luxton's Red. D. (Lehman.) A dark red bud sport of George Luxton, with all the other good qualities of its parent.....	25	Sept. 12	.75	2.00	Orchid Helen. D. (Becker.) Pictured p. 11, 12. Sturdy, orchid-pink flowers of unusual beauty. Very strong, healthy.....	18	Sept. 10	.60	1.50
Magenta Spoon. D. (Lehman.) Pictured p. 16. Lively magenta-rose spoon flowers in profusion.....	22	Oct. 1	.60	1.50	Orsona. D. (DePetris.) Red-bronze decorative. Bushy cushion growth habit.....	24	Sept. 25	.60	1.50
Mahogany Cushion. D. (Lehman.) Twisted petals of Jasper-red shading to mahogany. Large cushion plant.....	20	Sept. 28	.60	1.50	Patricia Lehman. D. (Kraus.) Pictured p. 9. Sparkling geranium-pink with peach center. Recurved and twisted petals give a fluffy, feathery effect. Strong growth, good for cut flowers.....	24	Sept. 28	.60	1.50
Malinda Brown. D. (Kraus.) Pictured p. 11. A magnificent clear self lavender-pink. Flowers globular, mounded at center; petals strongly incurved and twisted. Very strong and healthy.....	24	Sept. 27	.60	1.50	Pink Quill. A large, full-centered spidery quill. Outer petals flesh to shell-pink, shading to salmon-pink in center. A gorgeous new thing.....	24	Sept. 25	.75	2.00
Marie Hartman. D. (Kraus.) Large, canary-yellow flower, 4 inches in diameter. New flowers cover old bloom to give fresh appearance for a full month.....	18	Sept. 28	.75	2.00	Pink Spoon Cushion. D. (Fleming.) New 1959! Outstandingly free flowering in our trials here and a good addition to any collection. Masses of orchid-pink, semi-quilled spoon flowers cover the plants for several months.....	20	Sept. 26	.75	2.00
Martin's Yellow. D. Pictured p. 12. In our estimation the very finest early, large-flowered light yellow in existence. Flowers very large, fluffy and exquisite light yellow.....	18	Sept. 15	.60	1.50	Polaris. S. A golden yellow daisy with two rows of wide, stiff petals and large yellow center.....	24	Oct. 5	.75	2.00
Mary Harrison. SD. (Kraus.) Bright, glowing aster-purple, lightening to phlox-purple. Semi-double. Excellent for cutting.....	24	Sept. 26	.60	1.50	Polar Ice. D. (Kraus.) Clear ice-white, double, 3-inch flowers. Very free flowering. One of the earliest.....	22	Sept. 9	.60	1.50

Name and Description	Height in Inches	Blooming Date	Price Each	Price Per 3	Name and Description	Height in Inches	Blooming Date	Price Each	Price Per 3
Prairie Moon. D. (U. of Minn.) A creamy white, large, double-flowered variety. The prolific-blooming, willowy plant has clean foliage and presents a neat appearance throughout the season.	24	Sept. 16	\$1.00	\$2.50	Ruthann Lehman. D. (Kraus.) Pictured on cover and p. 17. Immense, canary-yellow flower. Excellent plant and growth habit. Long stems make it a fine cut-flower variety.	24	Sept. 18	\$.60	\$1.50
Prairie Sunshine. D. (U. of Nebr.) Large, 3 to 4-inch flowers of brilliant pure yellow cover the healthy plants from early August until freezing. Three full months of color. A great new Mum	20	Sept. 4	.75	2.00	Ruth Scott. D. (Kraus.) Fine reflexed, incurved golden bronze, 4½-inch flower.	24	Sept. 28	.75	2.00
Princess. D. (U. of Minn.) Pictured on cover. Extremely early flowering, split-petaled or carnation-flowered Mum. Color deep old-rose with gold tipping. In good bloom for two months.	16	Aug. 23	.75	2.00	Spellbound. D. Husky, decorative plant with flowers of delicate pink.	22	Oct. 1	.75	2.00
Princess Kay. D. (Lehman.) This is a fully double, broad-petaled, heavy-textured flower of alabaster-white, showing no yellow center. Produces 3½-inch terminal flowers, with 8 to 10 blooms on lateral branches. As beautiful as the lovely girl it is named for.	24	Sept. 20	.75	2.00	Stylish. D. (Bristol.) Shapely, recurved, 3-inch bloom, silvery vermillion to old-rose and raspberry-cerise. A glowing novelty.	28	Sept. 28	.75	2.00
Purple Cushion. SD. Glorious mounds of peony-purple flowers that completely smother the compact plants with color.	20	Sept. 24	.75	2.00	Success. D. (C-P.) Pictured p. 17. Large, rich, never-fading flowers of deep crimson. Rigid, upright plant. Very clean.	22	Oct. 7	.75	2.00
Purple Dusk. D. Attractive, clean light purple flowers on short, upright plants. Very free flowering.	22	Sept. 26	.60	1.50	Sunstone. Sp. (DePetris.) Masses of soft yellow, quilled, spidery spoons on vigorous plants. Outstanding for flower arrangements and fine for garden decoration.	30	Oct. 8	.60	1.50
Purple Heart. D. (Lehman.) Semi-quilled petals of grapejuice-purple with a silvery reflex. This flower ages well and is a beautiful color when several weeks old.	26	Sept. 28	.75	2.00	Tecumseh. D. (U. of Nebr.) Opens earth-red, aging to buffy bronze with pink edges. Cushion growth.	18	Sept. 2	.60	1.50
Purple Spoon. Sp. (Lehman.) The very earliest good-flowered spoon in our entire collection. Both tubes and spoons soft purple.	22	Sept. 20	.75	2.00	Theresa Stone. D. (Kraus.) A glorious creamy white pompon with a drifting sheen of primrose and ivory. Very perky.	20	Sept. 26	.60	1.50
Purple Waters. D. (Lehman.) Pictured p. 10. The best early deep purple in our collection. Double, 3-inch flowers completely smother the 2-foot plant. If you like purple Mums, this will please you.	24	Sept. 17	.75	2.00	Tonka. D. (U. of Minn.) A large-flowered, fully double, deep yellow variety. The flowers and clean, rich green foliage are borne on stiff stems.	20	Sept. 10	1.00	2.50
Raggedy Ann. D. Pictured on cover. Interesting snow-white split-petaled or carnation-flowered variety that is outstanding in the garden. Compact, cushion-like growth completely covered with flowers for two months.	16	Sept. 25	.75	2.00	Violet. D. (Longley.) Pictured p. 2. The best very early purple. Full, dahlia-like bloom with good color and substance.	20	Aug. 26	.50	1.25
Red Elf. SD. (Lehman.) Dwarf, clean, bright red pompons on tiny plants not over 12 inches tall.	12	Sept. 9	.60	1.50	Vulcan. D. (U. of Minn.) Pictured p. 27. Deep crimson flowers with a rusty sheen on low, compact plants. This is our best very early red to date.	16	Sept. 5	.60	1.50
Redglow. D. (Kraus.) Pictured p. 13. Dark glowing red pompon flowers in abundance. Courageous-type plant. Excellent habit.	30	Sept. 20	.60	1.50	Wanda. D. (U. of Minn.) Three-inch flowers of raspberry-red aging to carmine-rose cover the mound-like plants from early August to killing frost.	18	Aug. 14	.60	1.50
Red Torch. S. (Lehman.) Bright single red. A replacement for Louise Schling. A bit late but frost-hardy. A mass of striking color.	30	Oct. 5	.60	1.50	Wenonah. D. (U. of Minn.) Pictured p. 27. Wonderfully free and early-flowering, pure soft lavender-pink pompon. One of the very first to bloom.	18	Aug. 24	.60	1.50
Reflection. D. (Lehman.) An extremely free-flowering, deep rosy lavender. Completely covers itself with bloom. Replaces Cecil Beed.	24	Sept. 26	.60	1.50	White Cloud. D. (U. of Nebr.) Large, feathery, pure white. Strong plant. We consider this the most satisfactory of all white Mums for garden planting.	26	Sept. 20	.60	1.50
Remembrance. D. (Krause.) A deep ruby-carmine color that is retained for the life of the flower. One of the very best reds. Frost-hardy.	24	Sept. 27	.60	1.50	White Masquerade. D. (Thomas.) Shining mass of silvery white pompons. Beautiful companion for Masquerade.	24	Oct. 6	.75	2.00
Reverence. D. (Kraus.) Extremely large, light chamois-yellow. Gives early individual flowers on 6 to 8-inch stems.	22	Sept. 3	.60	1.50	White Sail. D. (Lehman.) The best midseason white. Very heavy-textured flowers are white with slight cream center. Clean, vigorous growth, branching from ground, makes excellent cutting material.	21	Sept. 23	.75	2.00
Rouge Cushion. D. (Lehman.) Pictured p. 2. A far superior red cushion. Intense red flowers show a small bright yellow center when mature.	15	Sept. 20	.60	1.50	Winterset. D. (Peck.) Pictured p. 19. Strong-growing, large snow-white. A timely cutting and garden Mum.	28	Oct. 2	.60	1.50
Royal Robe. D. (Kraus.) Beetroot-purple flower with a bluish sheen reflecting from the center. A very good all-round variety. Color superb.	27	Sept. 25	.75	2.00	Yellow Avalanche. D. (Lehman.) Pictured p. 27. A brilliant soft yellow bud sport of the popular white Avalanche. Unexcelled for cutting and unsurpassed in beauty.	22	Sept. 4	.50	1.25
Ruby Breithaupt. D. (Kraus.) Large, 6-inch, domed, shaggy flowers of pleasing light primrose-yellow. Excellent as a disbud.	28	Oct. 1	.75	2.00	Yellow Chris Columbus. D. (Neal Bros.) An extra bright lemon-colored sport of Chris Columbus.	26	Sept. 15	.60	1.50
Ruby Spoon. D. (Lehman.) Pictured p. 16. Large, bold, firm, spoon-type flower of bright ruby-red.	24	Sept. 27	.75	2.00	Yellow Ermine. D. A bud sport of Ermine. Glorious, fluffy, light chrome-yellow flowers in abundance on long stems.	30	Oct. 1	.60	1.50

5

All-American Red

Admiral
Apache

Courageous
Crown Jewel

Lipstick

5 Sure-to-Bloom Plants
(1 of each)

\$2.90

(\$3.45 value)

5

All-American White

Ermine
Ostosa

White Sail
White Cloud

Winterset

5 Sure-to-Bloom Plants
(1 of each)

\$2.80

(\$3.15 value)

5

**All-American
Lavender-Pink**

Evelyn Devaney Old Lavender
Malinda Brown Patricia Lehman
Reflection

5 Sure-to-Bloom Plants
(1 of each)

\$3.00

(\$3.15 value)

SPECIAL OFFER!

30 All-American Mums

(1 of each listed on this page)

\$16.50
POSTPAID

5

All-American Bronze

Autumn Beauty George Luxton
Crowning Glory Holiday
Kathleen Lehman

5 Sure-to-Bloom Plants
(1 of each)

\$2.85

(\$3.05 value)

5

All-American Yellow

Charles Nye
Delight

Lee Powell
Muriel Rice

Ruthann Lehman

5 Sure-to-Bloom Plants
(1 of each)

\$2.75

(\$3.05 value)

5

All-American Purple

Chippewa Purple Heart
Myrtle Walgreen Purple Waters
Royal Robe

5 Sure-to-Bloom Plants
(1 of each)

\$2.75

(\$3.50 value)



MURIEL RICE. 75c each; 3 for \$2.00



BUTTERSCOTCH. 75c each; 3 for \$2.00



HOLIDAY. 60c each; 3 for \$1.50

**6
BIG FLOWER
COLLECTION**

All have very large flowers for garden Mums and all are early blooming. Flowers up to 5 inches if disbudded.

6 Sure-to-Bloom Plants

\$3.90

(1 of each pictured)



APACHE. 75c each; 3 for \$2.00

MOJAVE GOLD. 75c each; 3 for \$2.00



PATRICIA LEHMAN. 60c each; 3 for \$1.50



HILITE (Yellow). 75c each; 3 for \$2.00
EARLY CRIMSON (Red). 60c each; 3 for \$1.50



PURPLE WATERS. 75c each; 3 for \$2.00

5 ARRANGEMENT COLLECTION

All five varieties are extremely good for arrangements.

5 SURE-TO-BLOOM
PLANTS

\$3.10

(1 of each pictured)

DAISYUM. 75c each; 3 for \$2.00



BRONZE GIANT. 75c each; 3 for \$2.00





CHARLES NYE. 50c each; 3 for \$1.25



CYDONIA. 50c each; 3 for \$1.25



JOYOUS. 75c each; 3 for \$2.00



ORCHID HELEN. 60c each; 3 for \$1.50



ERMINE. 60c each; 3 for \$1.50



LEE POWELL. 60c each; 3 for \$1.50



INDIAN RED. 75c each; 3 for \$2.00



APRICOT GLOW. 60c each; 3 for \$1.50

DOZEN MUM COLLECTION

A grand assortment of all colors, types and blooming seasons that will give one a complete Mum garden.

12 Sure-to-Bloom Plants (one of each pictured) plus 1 Butterscotch (see page 15)

12 Plants for \$5.25

A SENSATIONAL BARGAIN!



YELLOW SPOON. 60c each; 3 for \$1.50

APACHE
75c each;
3 for \$2.00

MALINDA BROWN
60c each;
3 for \$1.50





AUTUMN BEAUTY. 50c each; 3 for \$1.25



GLADNESS. 50c each; 3 for \$1.25



JUBILEE. 60c each; 3 for \$1.50
AVALANCHE. 50c each; 3 for \$1.25



ORCHID HELEN. 60c each; 3 for \$1.50



MARTIN'S YELLOW. 60c each; 3 for \$1.50

7

**COLOR MOUND
COLLECTION**

A selection of seven very fine early-blooming, low-growing kinds. Ideal for foreground or border edging.

7 Sure-to-Bloom Plants

\$3.00

(1 of each pictured)



GOLDEN MOUND. 50c each; 3 for \$1.25



BUTTON POMPONS



MASQUERADE. 75c each; 3 for \$2.00



HONEYCOMB. 75c each; 3 for \$2.00

9
Perky
POMPON
COLLECTION

Everyone's favorite. The trim, compact, very double flowers are ideal for arrangements. The blooms, although small, are lavishly produced on compact plants which are completely covered with flowers.

One of each pictured here PLUS:
Edna Rowley. New. Pink button pompon with ruby eye.
White Masquerade. New. Exactly like Masquerade except that the color is clear lavender-white.

9 Sure-to-Bloom Plants
SPECIAL PRICE
\$4.50



GOLD BUTTON. 75c each; 3 for \$2.00



JEWELTONE (Pink). 60c each; 3 for \$1.50
JUBILEE (Red). 60c each; 3 for \$1.50



EARLY CRIMSON. 60c each; 3 for \$1.50



REDGLOW. 60c each; 3 for \$1.50



Let Us Make Your Selection

If you prefer to have personal, professional help in selecting the varieties for your particular needs, let us make your selection. Send us the amount you wish to spend for GARDEN MUMS, tell us what color and types you prefer—whether for cutting or garden display, whether early, late or midseason varieties—and we will select the best in our large collection of over 200 varieties. You save approximately 30% by having us select your Mums.

You will be thrilled by the fine plants you receive. All will be labeled and SURE-TO-BLOOM.

Enclosed please find my check for which I would like you to select some Mums for me. The ones I received from you last year were magnificent and admired by everyone in the neighborhood.—Mrs. S. L. S.

Euclid, Ohio

La Crosse, Wis.

When an expert picks them, it certainly tells. Our Chrysanthemums were the best we have ever had. Our garden looked like a sample of The Lehman Gardens. Every plant bloomed splendidly and we enjoyed them all.—S. M. F.

The Greatest MUM Bargains of 1959



What Other People Say:

The Chrysanthemums I ordered back in the spring are blooming so beautifully. The Surprise Collection I ordered are the most beautiful blooms and colors I have ever seen. They are just wonderful and each one is different.—Mrs. E.A. Madisonville, Ky.

I am enclosing my check for which please send me the Surprise Collection. I ordered this collection last year and was very well pleased.—H.M.G.M. Rutland, Vt.

Last year I had your Surprise Collection of 25 and I was sure pleased with them. They grew and bloomed nicely.—E.E. Caldwell, Ohio

Please send me your Surprise Collection. This is the third time I have sent for this collection and I certainly have received some beautiful Mums this way.—Mrs. M.L. St. James, Minn.

This is now the third time that I have given you an order for the Surprise Collection, and I have never ordered any other by name. The reason for this is that the Surprise Collection offers all the varieties and colors wanted in a small garden. They have never been a disappointment.—H.O.R. Dargosetti, Tex.

I had your Surprise Collection last year and I was very pleased with the types and colors. The plants arrived in perfect condition.—M.E.F. Auburn, N. Y.

Surprise Collection

If you do not care about the names of your Mums, but just want to grow them for a gorgeous display in the fall or for cutting bouquets for the house, then you can save money by ordering this special Surprise Collection. It includes every color and type shown in this catalog. All are first-quality, sure-to-bloom plants, but come to you unlabeled as to name. See for how little money you can have a big Mum garden.

5 for \$1.55; 10 for \$2.90; 25 for \$6.75; 100 for \$25.00



MAGENTA SPOON. 60c each; 3 for \$1.50

7
Sterling
**SPOON
MUMS**
A complete color
range in these popu-
lar novelties.
7 Sure-to-Bloom Plants
\$3.55
(1 of each pictured)



BLUSHWHITE. 60c each; 3 for \$1.50



GARNET SPOON. 60c each; 3 for \$1.50



GOLD SPOON. 60c each; 3 for \$1.50



LOVELINESS SPOON. 60c each; 3 for \$1.50



YELLOW SPOON. 60c each; 3 for \$1.50



RUBY SPOON. 75c each; 3 for \$2.00



ADMIRATION. 75c each; 3 for \$2.00



EVELYN DEVANEY
75c each; 3 for \$2.00



TRIBUTE. 60c each; 3 for \$1.50



RUTHANN LEHMAN. 60c each; 3 for \$1.50

7
Good
MUM
COLLECTION

Seven outstanding, good
all-round varieties.

7 Sure-to-Bloom Plants

\$3.95

(1 of each pictured)



SUCCESS. 75c each; 3 for \$2.00



CARNIVAL
75c each; 3 for \$2.00



AVALANCHE. 50c each; 3 for \$1.25



OLD LAVENDER. 60c each; 3 for \$1.50



JULIE B. 75c each; 3 for \$2.00

**4 NOVELTY ARRANGEMENT
COLLECTION**

4 Sure-to-Bloom Plants

\$2.40

(1 of each pictured)

Our granddaughter Julie B. playing "He loves me, he loves me not" with Daisymum.



DAISYMUM. 75c each; 3 for \$2.00



LADY'S CHOICE. 75c each; 3 for \$2.00



ADMIRAL. 75c each; 3 for \$2.00

7
Bouquet
MUMS

Mums as cut flowers in the house seem to last forever. Plant this collection and pick armfuls of wonderful long-stemmed flowers.

7 Sure-to-Bloom Plants

\$3.70
(1 of each pictured)



FOOTBALL BRONZE. 60c each; 3 for \$1.50



LEE POWELL. 60c each; 3 for \$1.50



BETTY. 50c each; 3 for \$1.25



WINTERSET. 60c each; 3 for \$1.50

CHARLES NYE. 50c each; 3 for \$1.25



EVELYN DEVANEY. 75c each; 3 for \$2.00





PRESIDENT. \$1.75 each



RAMONA. \$1.75 each



HENRYI. \$1.75 each



LADY BETTY BALFOUR. \$1.75 each



JACKMANI. \$1.50 each

CLEMATIS *Special Offer*

1 RED 1 WHITE 1 PURPLE

If you are not familiar with varieties and would like us to help you make your selection, we can save you 30%.

3 Sure-to-Bloom Plants \$4.00

CRIMSON STAR. \$2.00 each



NELLY MOSER. \$2.00 each

CLEMATIS

Since the introduction of the large-flowered hybrid varieties from Europe, the Clematis is rapidly becoming one of the leading vines in America. These new hybrids have spectacular flowers and glorious colors. Most of them are practically everblooming. They can be grown on trellises, arbors or posts, or can be left to ramble over an old stump or rock wall.

We find that an east or south exposure is best. They prefer a rich soil and can take a lot of water, provided the drainage is perfect.

COMTESSE DE BOUCHAUD. In our estimation the closest approach to clear pink of all the hybrid Clematis. The color is a clear satiny rose. Flowers in abundance from July until September. Neat growing habit, up to 7 to 8 feet. \$2.00.

CRIMSON STAR. We think this is the finest of all hybrid red Clematis. Large, clear crimson flowers with pointed petals. Very free flowering, blooming from July to September. The variety we offer is true Crimson Star. \$2.00.

DUCHESS OF EDINBURGH. Double, gardenia-like, cream-white flowers with a chartreuse overcast. Very unique and desirable. In bloom from mid-July on. \$2.00.

ERNEST MARKHAM. A very strong-growing Clematis in red shades. Petals wide, rounded at the ends, of bright cerise-red. Perhaps the best of all the light reds. July blooming. \$1.75.

FAIRY QUEEN. The finest white in our collection. Large, wide-petaled flowers 7 inches across; pure white with a pearl overcast. In bloom from June to September. Sturdy growth to 10 feet in height. \$1.75.

HENRYI. The giant among white Clematis. Large, paper-white, long-pointed petals and chocolate-brown anthers. In bloom from July to frost. Vigorous growth, 8 to 10 feet. \$1.75.

HULDINE. The translucent blooms are pearly white with a bluish undertone. Strong growing, up to 12 feet. Free flowering from July to October. \$1.75.

JACKMANI. The most popular Clematis in America. Seen throughout the length and breadth of the land with its masses of four and five-petaled, deep purple flowers in July. Extremely vigorous and hardy. 8 to 10 feet. \$1.50.

JACKMANI SUPERBA. A new hybrid that is larger and deeper colored than Jackmani. A splendid addition to the deep purple class. Rich velvety deep purple in color, and in bloom most of the summer. Height to 8 feet. \$1.75.

LADY BETTY BALFOUR. This is the finest deep blue in our collection. Color is a very velvety deep navy-blue with a center of white anthers. Very vigorous and free flowering. Plant Lady Betty Balfour and you plant the best in deep blue Clematis. Height to 12 feet. \$1.75.

LANUGINOSA CANDIDA. Large flowers of the purest white, abundantly produced from midsummer to frost. Plant vigorous and sturdy, climbing to 10 feet. \$1.75.

M. KOESTER. An extremely vigorous and free-blooming mauve-pink. In bloom from midsummer to frost. Sturdy growth to 10 feet. \$1.75.

MME. BARON VEILLARD. An extremely vigorous and satisfactory pink Clematis. Color is a clear lilac-rose, becoming much deeper in the fall as the days become cooler and shorter. In continuous bloom from June to September. Very sturdy growth from 10 to 12 feet. \$1.50.

MME. CHOLMONDELEY. An extremely early-flowering variety of wisteria or delphinium-blue. In bloom from June to September, on moderately vigorous plants to 8 feet. \$1.75.

MME. EDOUARD ANDRE. One of the older red Clematis, with smaller flowers on moderately vigorous plants. \$1.50.

NELLY MOSER. The very earliest of all Clematis to bloom. The first flowers usually appear right after the Darwin tulips bloom and continue most of the summer. Color pale mauve-pink with a red stripe down the center of each petal. Moderate growth to 8 feet. \$2.00.

PANICULATA. Quantities of small, fragrant, star-shaped white flowers. Very popular and widely grown. 15 to 18 feet. Blooms in September and October. \$1.50.

PRESIDENT. One of the most gorgeous of the deep rich reddish plum-colored varieties. Flowers are large, with extremely pointed petals and brilliant color. Moderate growth up to 7 to 8 feet. June. \$1.75.

There are no insects or diseases that trouble Clematis in the North. They are perfectly hardy and make excellent cut flowers. Planting can be done in the spring. The plants we send out are one year old, pot grown, and should be planted 3 to 4 inches deeper than they were in the pot. This is important, and perhaps the reason for many failures with Clematis is too shallow planting. Our collection now consists of over 50 varieties, and we are herewith listing some of the most spectacular and easy-to-grow kinds.

RAMONA. Our favorite of all the medium blue Clematis. Flowers exceptionally large (6 to 8 inches across), with wide, heavy-textured petals. Free and dependable bloomer from July until frost. Plant vigorous, climbing to 10 feet. \$1.75.

VILLE DE LYON. Very free-flowering carmine-red with darker stripe in the center of each petal. Blooms from July to September and grows to a height of 8 to 10 feet. \$1.75.

WILLIAM KENNETH. Very large, deep cool lavender flowers produced in abundance from June to September. \$1.75.

PASSIFLORA (Passion-Vine)

One of our hobbies over the years has been collecting and growing these exotic and interesting vines. If they are planted out in the spring and given rich soil, abundant moisture and a sunny spot, they will provide a succession of bloom all summer long. They are not hardy in the North, so they must be treated as annuals or taken indoors for the winter. They can also be grown in large pots sunk into the ground for the summer. A vine in flower will create much interest among your gardening friends. Our plants are large, one-year old vines that are sure-to-bloom within a month after planting.

ALATA CAERULEA. Large, showy, fragrant flowers with lavender-pink petals and purple crown with white corona. The most spectacular Passiflora. Sturdy plants. \$1.50.

INCARNATA (Maypop). Greenish white petals and blue-purple filaments. The easiest to grow and most free flowering. \$1.50.

MARCEL. A curious hybrid with lilac-pink petals and light blue, crinkled filaments. Extremely fragrant. \$1.50.



HYBRID CLEMATIS

Mum Culture and Care

We believe our sure-to-bloom plants, grown from virgin cuttings, well established in 2¼-inch pots and sent to you with a ball of good soil about the roots, are the most practical and economical to buy. Our Mother plants are grown as nature intended them to be—a rest period of two months. This insures much more vigorous offspring than plants grown by many who use the artificial method of keeping the plants growing the year around, which decreases vigor and encourages premature budding. Our plants make big, healthy, blooming specimens by early fall. Our Mum stock is carefully grown and regued, true to name, and state inspected. We take pride in having Mum plants with clean, healthy foliage clear to the ground. We have hundreds of letters in our files from every state in the country telling us how well our plants have done in all sections.

CULTURE

Mums in the garden should be planted in an open, sunny location and should not be shaded by buildings, large shrubs or trees for more than three or four hours per day. Any fairly rich soil, be it sandy, clay or loam, that will grow other flowers and vegetables well, will also grow good Mums. There is no soil that Mums particularly favor; they will grow equally well in all. They love humus such as peat, leaf mold or barnyard manure. They will not thrive in a hard-baked and cracked soil. Loosen it up with peat so the water will penetrate and not run off when applied.

PLANTING

Spring is by far the best planting season. The proper planting time is when the spring garden work is well under way and the heavy, ice-freezing frosts are past. Planting can begin about the time early tulips begin to bloom and can be continued until peonies are in bloom. Here in Southern Minnesota this would be from about late April until mid-June. Farther south this date would be advanced according to the climate. Young plants always give the best bloom, so we recommend that clumps that have wintered be divided in the spring to individual shoots when they have made 4 or 5 inches of growth. You will be surprised how rapidly these small shoots will grow and how much better bloom they will give you than old crowded clumps.

FERTILIZING

Our Mums are grown in a black loam soil to which peat has been added. Inasmuch as peat is completely deficient in phosphate, we use bonemeal or superphosphate well worked into the soil before planting, at the rate of a small handful per plant.

At planting time it is good practice to give your plants a head start by using one of the water-soluble fertilizers such as Ra-Pid-Gro, Plant Marvel, Hyponex or Instant Vigoro. Dissolve this fertilizer in water according to directions, and then make a saucer-like ring around each plant. Give each one a good soaking of about a gallon of this solution. This process can be repeated at one-month intervals during the summer for maximum growth.

If you prefer to use a dry fertilizer in place of the liquid, one or two applications will be sufficient. Roughly, about a small handful of commercial fertilizer per plant at about one-month intervals is sufficient. The first application can be made in late July or early August. This highly concentrated fertilizer should not be used when the soil is dry, because foliage and root burn will result. Be sure that plenty of moisture is available at time of application.

WATERING

The best way to water Mums is to make a saucer-like depression about the plant, lay the hose on the ground, and let the water run slowly. The following day the soil can be loosened up and leveled again. A thorough watering like this should be sufficient for a week or ten days, even during the hottest and driest weather. Sprinkling the plants from overhead should be discouraged, for that invites foliage diseases.

PINCHING

To have sturdy and well-branched plants it is advisable to pinch the terminal shoots once or twice during the season. This operation is done with the thumb and forefinger and consists of removing about ½ inch of the soft growing tip of the main shoots. The first pinching should be done when the plants are about 6 inches tall, to induce

lateral branches. When these lateral branches are 8 to 10 inches tall, their tips should be removed to induce more branches. Discontinue pinching by August 1, as the plants will soon be forming buds. The very early-blooming varieties should not be pinched after July 15.

If your Mums are grown in partial shade or in extremely rich soil, they may grow very tall and spindly. To prevent this, one must use harsh treatment. We suggest using the pruning shears and cutting away the top half of the plant. This means that if your plants are 2 feet tall you should cut them back to 1 foot. In the North, this treatment should not be done after July 15 and in the South not later than August 15; otherwise buds will be destroyed. You will be surprised how rapidly the plants will outgrow this cropping and how nicely they will flower. A well-pinned plant will not need staking or other support, since the growth will be strong and sturdy and will stand erect.

SPRAYING

In order to get the best from your Mums we recommend a simple spray or dusting program to keep your plants free from insects and disease. In gardens with a wide variety of plants that naturally harbor insects and diseases, Mums will need a little attention. Usually the dusts or sprays recommended for roses will control the major Mum troubles. We think three or four dustings or sprayings at two-week intervals are sufficient to produce a good healthy crop of flowers.

The most common insects attacking Mums are aphids, tarnished plant bugs, red spiders and leaf hoppers. The less common ones are foliar nematodes and grasshoppers.

We have been very successful using a combination spray of Malathion, D.D.T. and Fermate at two-week intervals during the summer. This combination will control all major insects and leaf spots. We use the following concentrations:

To a gallon of water, we add the following:
1 tablespoonful 25% wettable Malathion, 2 tablespoonfuls 50% wettable D.D.T., 1 tablespoonful Fermate and 1 tablespoonful Dreft to make the solution stick to the foliage.

Foliar nematode is an extremely small insect that lives within the leaf tissue of Mums and causes the foliage to turn brown from the bottom of the plant upward; in severe cases all the foliage will be browned, leaving the naked flowers on the stems. In areas where the foliar nematode is troublesome, we recommend spraying with 15% wettable Parathion at the rate of one tablespoonful to a gallon of water. Although the Parathion is very toxic and somewhat dangerous, it is safe if used according to directions and with caution.

Another method of combating the foliar nematode is by using Sodium Selenate. This material is applied to the soil; the poison is absorbed by the roots and is translocated in the sap stream, making the plant poisonous to the insect. It should be applied to the soil at the rate of 1½ pounds to 100 square feet. This is a deadly poison, and no food crops of any kind should be grown on this soil for at least one year. If you are unable to secure Sodium Selenate locally, we can supply it at \$1.00 per pound. It cannot be sent through the mail and must come to you by Express Collect.

If you cannot secure good sprays from your local dealer, we are in a position to supply you with the following:

All Purpose Mum and Rose Spray containing Malathion, D.D.T. and Fermate or Captan, at the following prices:

8 ozs. \$1.50 (a season's supply for 50 plants)
Lb. \$1.75 (a season's supply for 100 plants)

D.D.T. 50% Wettable. Lb. \$1.25.

Fermate. ½lb. \$1.25.

Chlordane 45% Emulsion. ½pt. \$1.50.

Mum Culture and Care

BLOOMING TIME

It has been definitely proved that Chrysanthemums are sensitive to light and that the length of day determines the blooming time for a given variety. Since Minnesota is quite far north, where naturally the fall days are shorter than farther south, a given variety will normally bloom 20 days earlier here than in Texas. We are located approximately 200 miles north of Chicago, and we know that the same variety will begin blooming for us four or five days sooner than in Chicago. From this we deduce that perhaps two days for every 100 miles of latitude is about the average difference in blooming time.

Temperature is also a very important factor in the blooming time of Mums. For every day that the temperature is above 90 degrees during the bud-formation period (August and September) of garden Chrysanthemums, the blooming time will be retarded about one day. Hence when we have cool weather in fall, the Mums will bloom early and when we have hot weather the Mums will bloom late. Interesting, isn't it?

WINTER PROTECTION

The purpose of winter protection is probably more to keep the cold in the ground than to keep it out. A favorable location, one which does not allow ice and water to stand over the plants, is very necessary. It is the alternate thawing and freezing that does the winter damage to garden Mums. After the tops have been killed by frost, the stems should be cut off 2 to 3 inches above the crown and burned to prevent the spread of foliage disease. We have found that any light, porous material that will remain more or less dry during the winter is ideal for covering. Excelsior, evergreen boughs, marsh hay, and cornstalks are very good if applied after the ground is slightly frozen. Leaves applied and kept dry with a waterproof covering will also make very fine covering.

If your location is such that you have trouble wintering your Mums by covering with marsh hay or other material recommended above, we suggest that you try one or more of the following methods of wintering that have been used successfully by growers in different parts of the country. Remember, it is not the cold that kills the Mums in the winter . . . it is water that does the damage.

Here, we can winter Mums perfectly by digging the clumps in early November and packing them in coldframes as tightly as sardines, covering the plants with 6 or 8 inches of leaves and then putting a hotbed glass, plastic or some other waterproof material, over them.

We have also found that the light wells around the basement windows of modern homes are an excellent place to carry Mums through the winter. Dig them as for a coldframe, place the clumps in the light wells, cover with leaves, and then in the spring the plants can be divided and replanted.

I have had reports from folks who dig a trench about a foot deep, wrap the clumps in paper and then place them in the bottom of the

trench and bury them for the winter. In the spring they dig them up, divide the clumps and replant them.

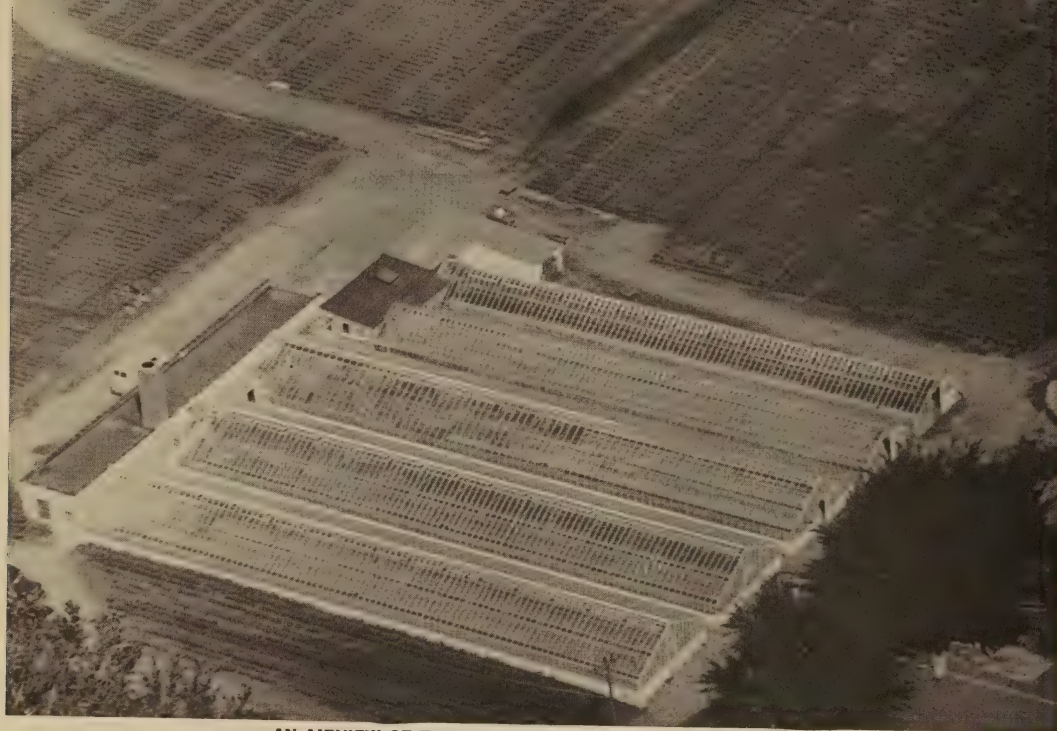
We have had good luck carrying Mums through the winter by digging the clumps in early November and placing them on top of the ground next to the foundation of the house for the winter. It is important to leave a good ball of earth around the roots and to cut the old top off at the ground level. Cover with several inches of leaves or marsh hay. Clumps that have been on top of the ground during the winter came through 100 per cent, whereas the same varieties left in the ground winter-killed.

THE ABC'S OF MUM CULTURE

- A — Appleblossom-time is the beginning of Mum planting time.
- B — Buy "Better-Grown and Sure-to-Bloom" plants.
- C — Close planting will make spindly plants. Give them 18 inches each way.
- D — D.D.T. dust or spray will keep bugs off.
- E — Early varieties give the most and best bloom in the North.
- F — Foliar nematode can be controlled with Parathion.
- G — Give your Mums plenty of water during the summer.
- H — Hoe around the plants regularly to aerate the soil and keep weeds down.
- I — Ice over the crowns during the winter is often fatal.
- J — July 30 should be the date of the last pinch.
- K — Kill all major Mum insects with Malathion and D.D.T.
- L — Light will determine blooming date.
- M — Mums from Minnesota can't be beat.
- N — Nicotine Sulfate (Black Leaf 40) will kill aphids.
- O — Overhead watering is not recommended.
- P — Pinching keeps plants sturdy and low.
- Q — Quality means Mums from Minnesota.
- R — Reap armloads of flowers from a few well-grown plants.
- S — Shade will make plants grow taller and bloom much later.
- T — Transplant and divide old clumps each spring.
- U — Use peat to improve your soil.
- V — Valuable information can be obtained from our catalog.
- W — Winter cover with marsh hay or porous material.
- X — X-perts say diseased stock should be burned.
- Y — You will enjoy our Kodachrome slides on Mums.
- Z — Zig-zag planting is more attractive than a single row of Mums.



Visitors strolling through our Test Gardens



AN AIRVIEW OF THE HOME OF MUMS FROM MINNESOTA

ALL-PURPOSE HOE THE BEST GARDEN TOOL EVER INVENTED



We have never sold tools but we can't resist offering this one manufactured of the finest materials right here in Faribault. We have used it for years in our own gardens, and it is positively the finest, easiest to use tool we have ever seen. Without stooping you get in between, around, alongside your MUM plants. The hoe goes where you want it to go. It is sharp—cuts easily. Pick off one weed or a lot of them. Very light. Something you ladies will appreciate—your husbands will, too.



IN BETWEEN



ALONG SIDE



AROUND

PRICE

ONLY \$2.15

POSTPAID IN U. S. A.

Only This Hoe Will Do These Tricks—Just Try One WHAT USERS SAY:

Please send me one of your All-Purpose Hoes. I have one and like it very much. It is in great demand in the neighborhood.—Mrs. R.B.,
De Forest, Wis.

Your All-Purpose Hoe is wonderful. So many neighbors have borrowed it. I am debating whether to tactfully suggest that they send for your catalog and get their own or just buy myself a new one in self defense. . . and keep it under lock and key.—Mrs. W.E.J.,
Birmingham, Mich.

I ordered one of the hoes from you two years ago. I just can't use any other. I am getting this one for a gift. It is wonderful for flowers and also in the garden.—Mrs. B.G.K.,
Abingdon, Va.

The All-Purpose Hoe I purchased from you early in the spring is all your advertisement says. . . I love it.—Mrs. A.D.T.,
Camden, N. Y.

The two hoes I ordered have arrived. I am so pleased with them. We have had this type hoe for many years but this new design really is an improvement over the original one. . . good as it is.—E.C.,
Crete, Ill.

This is a mighty fine hoe. We have two purchased from you and, believe me, they get good care.—G.S.B.,
Iowa City, Iowa

Our Fall Mum Show

"The Mums are blooming" has become a long-awaited and familiar greeting to thousands of Mum-lovers here in Minnesota and throughout the United States. When the days cool down and the leaves begin to turn, thousands of people all over the country take their scheduled trip to Faribault to see the Mums in all their glory. They are never disappointed, for each year many new varieties have been perfected and placed on display. This year "the Mums were blooming" from September 14 to November 2, and 40,000 people joined us in enjoying this feast of flowers which is set up and maintained entirely for your pleasure and at no cost to you.

Here at The Lehman Gardens in Southern Minnesota you can see 100,000 Mum plants in our large, unprotected fields. During the late fall these fields are transformed into ribbons of colors and are a magnificent sight. However, it is not every year that we are favored with a late fall. To beat the elements, we have constructed ten very large beds in which we grow five plants each of over 500 varieties. These beds are protected and maintained through the entire show. Here you can see all varieties blooming side by side and can check heights, blooming dates, etc. Our very first varieties begin to bloom about mid-August. By mid-September a great many of the earlier kinds are in full bloom. Between September 25 and October 10 is usually when the flowers are at their best. We suggest that you come at the time you would want your Mums in full bloom and check the varieties that are in full bloom at that time. Also in these outdoor beds are many of our seedlings—the Mums of Tomorrow—in different stages of selection. Each

variety that is selected from a planting of seedlings is grown and tested for four or five seasons to be sure it is worthy of naming and introduction.

In case of bad weather (and we have it in Minnesota), we maintain a bounteous display of Mums in our five greenhouses. The first two greenhouses are replete with rows of tables running the full length of the buildings. On these are displayed thousands and thousands of beautiful Mum plants in every conceivable color. A sign advising "Don't Miss This!" directs one to the third greenhouse. Here, indeed, is a breathtaking sight! The entire greenhouse has been transformed into an outdoor living room. A graveled path winds its way around a pool with sprays of bubbling water and floating Mum blossoms, past huge beds of Mums of all colors to the east entrance where tall cornstalks surrounded with pumpkin give a festive autumn air to the scene. Placed at intervals along the garden path are gaily striped canvas-covered love seats where one may relax and enjoy the beauty of the place. Nearly 3000 Mums have been planted on the three levels. The effect is startling, for great care has been exercised in the blending of harmonizing colors. All varieties are labeled, and many folks come each fall to pick out their varieties for the next season.

No matter the day or the weather—any time between September 15 and November 1 is the time to come to see the Mums. The display is maintained entirely for your pleasure, and we hope you, too, can come when "the Mums are blooming."

KODACHROME SLIDES

We have a set of Kodachrome Slides of Mums that makes an excellent free program for garden clubs, flower societies, study groups or church organizations. We gladly lend them to any reliable group entirely free of charge. This set contains more than 100 35 mm. or 2-inch kodachrome slides, all about Mums. Pictures included are individual flowers, borders, garden and field scenes, and beautiful artistic arrangements—all in full color. A short descriptive text accompanies the slides, which makes the showing time about one hour. The organization using the pictures need only supply the screen and projector.

If your group would like these slides for a future program, write us at least 30 days in advance, specifying the date of your meeting, and, if possible, an alternate date. You will receive a confirmation of your reservation. The slides will be mailed to reach you ahead of your meeting. We ask that you return them promptly, so that the next group may get them on time. Labels and postage for returning them will be supplied by us.

We are sure that your organization would enjoy a program on Mums. For your reservation write to

E. C. LEHMAN, The Lehman Gardens, Faribault, Minn.

Here is what people who have seen the slides have told us:

Flat River, Mo. Thank you for the use of your Kodachrome slides. Your company should be congratulated upon making such material available. I used the slides for two different groups, and each lady was of the opinion that one could not sit through such a beautiful series of pictures and not receive an inspiration to plant more and better Mums.—Mrs. R.T.

Freeport, Ill. We wish to thank you for the use of your set of Kodachrome slides of Mums which were shown last evening. They are sure wonderful slides and our club members greatly enjoyed them from the many lovely comments that were expressed by them.—E.H.S.

Toronto, Ohio. Thank you for the use of your slides. Everyone exclaimed over the beauty of the flowers and we all wish to thank you for making it possible for us to have them to show. We hope we may be able to visit your gardens sometime.—Mrs. W.L.

PART OF OUR INDOOR SHOW



MUM CHATTER 1959

It is with a grateful heart that I again address you, our many thousands of friends and customers. We are grateful because the first year in our second quarter-century has been the very best year that we have experienced. We thank you for your fine orders and your many expressions of appreciation for our goods and service. Our BETTER-GROWN and SURE-TO-BLOOM Mum plants are finding a wider acceptance each year and the demand is steadily increasing. We try to keep abreast of the new developments in the plant world and hope that our plants will prove better with the passing of each year.

We are this year introducing six very fine, early-blooming, garden Chrysanthemums that we have tested here in Southern Minnesota over a period of five or six years and that have stood the test and performed well. **Albafloa** is a new white that we think has great garden value. **Candleglow** is a soft cream-white pompon. Because of its strong, erect growth it stands out like a beacon in the garden. **Crystal** is a wonderful cutting white pompon with long stems. **Dandy** is a miniature football Mum in coppery bronze. **Gleam** is a golden yellow pompon that seems to have a sparkle that no other yellow in its season has. **Nobility** is a shade of red found in oriental carpets. I really think that these six will add much to any garden collection.

Some of the new things that we are listing from other sources that were found good here are **Ann Ladygou** from Dr. Kraus, and the first anemone garden Mum that we have listed. **King's Ransom**, **Artist's Delight** and **Stylish** were all outstandingly good in our trials. We were well impressed with the two varieties named by the University of Minnesota: **Tonka**, a nice large yellow, and **Prairie Moon**, an ivory-white. These are both welcome additions to the early-blooming, high-quality garden Mums. Dr. Kraus had given us two outstandingly good new varieties in **Nina Rebmen**, the brightest ruby-red to date, and **John Milbrath**, an early-blooming incurved bright yellow. The **Pink Spoon Cushion** from the Flemings of Lincoln, Nebr., impressed us with its fine color and exceptionally free-blooming habit.

We had a gorgeous blooming season here in Southern Minnesota last fall. Our open fields were still unhurt by frost and in good bloom after the first of November. We experienced a good growing season, although it was much dryer than usual. The rains just seemed to have come at the right time and made for a gorgeous fall bloom. Our open house brought in the largest crowds we have ever had. This is getting to be quite an annual event. We were glad to see many of our old friends and many familiar and new faces. We regret that during the blooming season with these tremendous crowds we are unable to get around and greet all of you as we would like to.

Just a few notes on some of the outstanding varieties blooming here last season. Among the whites, **Ermine**, **Daisyum**, **Princess Kay** and **Chris Columbus** were the most outstanding. **Ruthann Lehman**, **Hilite** and **Yellow Muriel** were by far the most outstanding we had in yellow bloom. **Bronze Giant** just stood head and shoulders over anything else in our entire planting. It is one of the finest garden Mums ever developed. **John Furst** gave some gorgeous long cutting stems later in the season. **Minnehaha** and **Princess**, though somewhat alike in color, were fine in the pastel group. **Evelyn Devaney** continues to be the finest pink we grow. It really is a wonderful Mum. In the dozen years we have grown **Masquerade** we have never seen it perform as it did this past season. It literally bloomed its head off and completely covered itself with those deep lavender flowers. Among the new things that we will have to offer in the early 60's will be some extra-fine cushions in very bright red.

We sincerely hope it will be a good garden year for you all.

—E. C. LEHMAN



We have received numerous reports on our Mums this past fall and will share them with you

Mrs. Alfred Wu of Glen Cove, N. Y., writes: "I think your Mums are the most beautiful! My first experience growing Mums was a bed of your lovely **Patricia Lehman**, and since then my enthusiasm for Mums has grown."

Mrs. Marcus Cassidy of Winchester, Ind., agrees: "Was well pleased with your selection **Patricia Lehman** is one of my favorites."

Those who like pink will agree with Mrs. Adam Sedlacek of Riverton, Wyo.: "Our Lehman Mums did fine last year. We especially love the color of **Evelyn Devaney**."

From Mt. Auburn, Iowa, Mrs. S. H. Pollack raves: "**Martin's Yellow**, **New Martin's White** and **Daisyum** are all so very beautiful and have done very well. **Bronze Giant** is just out of this world—I just love it—am crazy about it."

A satisfied customer in Hamden, Conn., is Mrs. George Hindinger, who says: "Your plants always arrive in superb condition and are always strong and vigorous. **Adorable** was extra special last year."

Mrs. Louis Baker of Oneonta, N. Y., sends this report: "I bought 13 Mums from you in the spring and they have been beautiful all fall. My favorites are **Daisyum**, **Bronze Giant**, **Butterscotch**, **Apache**, **Adorable**, **Yellow Avalanche**, **Chippewa** and **Bronze Pat**."

This compliment comes from Mrs. Cora Foringer of Fostoria, Ohio: "I want to tell you how very nice the Mums are I received from you this year. **Red Torch** is lovely. **Bronze Pat** is a profuse bloomer and especially beautiful."

Mrs. Floyd Nitzscke of Spencer, Iowa, writes: "Last spring I ordered 18 plants from you. They arrived in excellent condition and all bloomed. **Apache** and **Mojave Gold** were our favorites."

Another Mum grower, Mrs. A. L. Davidsaver of Elkader, Iowa, likes these varieties: "**Bronze Giant** is breath-taking and **Adorable** is the one that stops everyone to ask its name. **Purple Waters** and **Old Lavender** look as if they will be very beautiful. Of course **Charles Nye** and **Orchid Helen** are always nice. **Lee Powell** was one of my most beautiful Mums last year."

From Port Huron, Mich., Martha Richert comments: "The Mum I really enjoyed most last year was **Butterscotch**. I really picked a lot of flowers from one plant."

Letters like this one from Mrs. Carl Goeb of Cherokee, Iowa, make our business such a pleasure: "Last year **Bronze Giant**, **Daisyum**, **Adorable**, **Edna Rowley**, **Muriel Rice** and **Purple Waters** were really sensational. I have been an ardent gardener for 35 years and have kept a record for the past 15 years. My first order to you was eight years ago, and many of those are still in my garden."

A Mum fan at North Attleboro, Mass., Mrs. John Swearingen, writes: "Just a note to tell you of my luck this year with my Mums. First **Nye's Favorite**, **Early Kathleen** and **Edna Rowley** just bloomed their heads off. **Nye's Favorite** grew till the bloom head was larger than a bushel basket. **Gold Daisy** was very nice. **Edna Rowley** really made a hit for me."

Down south in Sarasota, Fla., Mrs. Edward Hymans liked these: "Down here last October **Sunstone** and **Evelyn Devaney** were truly beautiful."

And from Lebanon, Tenn., Mrs. Earl Ellis reports: "The quality of the plants I ordered from you last year was wonderful. I wish every Mum lover could have **Bronze Giant** and **Adorable**. I take great pride in telling our garden friends that our Mums come from The Lehman Gardens."

Way up north in Fargo, N. D., Mrs. Byron Williams, another satisfied customer writes: "This will be quite a letter, but it's all your fault for filling my last order so perfectly. I left the decision up to you and my Mums were just right. **Adorable** is still blooming even after repeated frosts."

Lester Sprowls, of Arkansas City, Kans., likes cushions: "**Minnpink** began blooming for us here in Southern Kansas on September 10 and it still a mass of color (October 12). It has received quite a bit of comment from the neighbors and visitors. We can surely recommend it for this part of the country."

These were the favorites in Mrs. Paul Hofford's garden in Gary, Ind.: "**Adorable**, **Fred Stone**, **Hilite**, **Marie Hartman**, **Mt. Hood**, **White Sail**, **Purple Waters** and **Old Lavender** made a hit with our visitors. We had some 200 the day of the Mum tour."

Francis J. Stengel from Reading, Penna., sends these nice words: "**Adorable** is just what its name implies. It is a real beauty and a great favorite with my wife. **Butterscotch** is a large, beautiful bloom and a marvelous plant all around. **Chippewa** was also beautiful."

A repeat customer is Mrs. R. E. Hillman, of Hinsdale, Mont., who liked these last fall: "The Mum **Apache** was simply lovely and I am surely going to order more of it next spring. **John Furst** turned out to be just gorgeous and also **Daisy-mum**."

Like so many of us, Mrs. Raymond Gossens of Manderson, Wyo., likes them all: "I thought I would tell you which were my favorites but I find it hard to decide. **Bronze Giant** has perhaps received most attention because of its size—5 inches across. I like **Apache** because it stays so long without fading on the plant or as a cut flower. I was pleasantly surprised with **Vulcan** and **Autumn Beauty**, which I got in a collection. They started blooming in August and are still full of blooms. I had not expected them to be so lovely."

HOW TO ORDER

We appreciate all orders. No order too large and none too small. Remittance may be made by registered mail for cash. Stamps, postal or express money order, and personal check also accepted. When sending check, kindly add 5c for exchange fee.

A 15% SAVING

We prepay the transportation charges on all orders of \$3.00 or more. On smaller orders, kindly add 15% for postage. When you order from us you know exactly what your plants will cost you delivered to your door.

ANOTHER SAVING

Minnesota has no sales tax law. Do not include your state sales tax when remitting to us.

SPECIAL DELIVERY

If you want quick delivery of your plants, we are equipped to give you this service at the following rates:

1 to 4 plants 45c
5 to 24 plants 55c
over 25 plants 70c

Just add the amount to your remittance and we will prepay postage and send Special Delivery. An extra plant will be enclosed with each Special Delivery order.

MUMS AS CHRISTMAS GIFTS

Solve your Christmas shopping problems by giving "MUMS FROM MINNESOTA" to friends and relatives. It's simple! Avoid the crowds! Just make your selection from this catalog at home and mail it to us. That's all you have to do. We will send your friends a gift card at Christmas-time giving the names of the plants you have chosen to be sent at spring-planting time. The Mums will be sent out postpaid in the spring, all ready to start growing in their gardens. Your friends will truly appreciate your thoughtfulness in choosing "MUMS FROM MINNESOTA" for their Christmas gift.

FREE PLANTS

In the past we have always received much pleasure from including additional plants of some of the better varieties as gift or gratis plants. We hope to continue this custom. The number of gift plants will be determined by the size of the order. Whenever we order plants from a nursery, we are always thrilled to receive something we didn't expect. We hope our choices will please you. The Golden Rule will be applied here.

SUBSTITUTIONS

This year we are growing nearly a million sure-to-bloom Mums. We know this will not be enough to supply all our customers. If we cannot supply the variety ordered, **may we substitute a variety of equal or greater value of a similar color and season of bloom?**

Sensational Bargains

5 AUGUST MUMS \$2.50

**All sure-to-bloom
in August**

Dainty. Lavender.
Dark Red Gold. Red.
Dr. L. E. Longley. Pink.
Early Gold. Yellow.
Violet. Purple.

5 EARLY SEPT. MUMS \$2.65

**All sure-to-bloom
in Sept.**

Autumn Beauty. Bronze.
Chippewa. Purple.
Delight. Yellow.
Lipstick. Red.
Wenonah. Pink.

5 LATE SEPT. MUMS \$2.75

**All sure-to-bloom
in Sept.**

Lee Powell. Yellow.
Malinda Brown. Lavender.
Patricia Lehman. Salmon.
Purple Waters. Purple.
White Cloud. White.

5 OCTOBER MUMS \$2.90

**All sure-to-bloom
in October**

Butterscotch. Bronze.
Charles Nye. Yellow.
Indian Red. Red.
Lady's Choice. Flesh.
White Sail. White.

20 ORDER BLANK COLLECTION

(1 of each listed above)

\$9.00

Postpaid



YELLOW AVALANCHE. 50c each; 3 for \$1.25



AUTUMN BEAUTY. 50c each; 3 for \$1.25



CHIPPEWA. 50c each; 3 for \$1.25

**7
SUMMER
BLOOMING
MUMS**

A selection of good early-flowering Mums that always beat the early fall frosts. Very dependable varieties.

7 Sure-to-Bloom Plants

\$3.30

(1 of each pictured)



ADORABLE. 75c each; 3 for \$2.00



WENONAH. 60c each; 3 for \$1.50



VULCAN. 60c each; 3 for \$1.50



EARLY GOLD
50c each; 3 for \$1.25

1959 MUM OF THE YEAR

MINNPINK

75c each;
3 for \$2.00

A single plant of the sensational new cushion Mum developed by the University of Minnesota.



MINNPINK

FOR A MASS OF COLOR PLANT CUSHION MUMS

Their mound-like habit of growth resembles azaleas. All early kinds.

Special Offer, 6 Colors

RED	YELLOW	BRONZE
WHITE	PURPLE	PINK

6	Sure-to-Bloom Cushions (1 of each color)	\$2.50
18	Sure-to-Bloom Cushions (3 of each color)	\$7.25
30	Sure-to-Bloom Cushions (5 of each color)	\$10.00



A Spectacular Planting of Cushion Mums